

LAW ENFORCEMENT

World Leader in Supplying
LAW ENFORCEMENT Equipment and Training

CUFFS - SPEED CUFFS

TA03104



*Image is for illustration purposes only

Cheek Body	Steel SHP-1 : 2.6/T, Nickel Plated
Ratchet Arm	Steel SM45C : 4.0/T, Nickel Plated
Chain	Stainless
Weight	310/gms
Feature	Embossing type cheek plate & I beam ratchet Double locking system & Inside protect wall
Plating Nickel:	3.96 microns
Min. Inside perimeter	155/mm
Max. Inside perimeter	210/mm
Wrist Opening	52/mm

ONE STOP SHOP

CONTACT US

+972.3.691.4564 +972.3.691.4567 @ tar@tarideal.com www.tarideal.com
20 Zvi Bergman St. Petah Tikva, 4927976, Israel

LAW ENFORCEMENT

World Leader in Supplying
LAW ENFORCEMENT Equipment and Training

CUFFS - HIGH SECURITY CUFFS

TA03106



*Image is for illustration purposes only

Cheek Body	Steel SHP-1 : 2.6/T, Nickel Plated
Ratchet Arm	Steel SM45C : 4.0/T, Nickel Plated
Plating Nickel:	3.96 microns
Chain	410/mm Stainless (including the swivel eyes)
Weight	450/gm
Feature	Embossing type cheek plate & I beam ratchet Double locking system & Inside protect wall
Min. Inside perimete	270/mm
Max. Inside perimeter	200/mm
Wrist Opening	70/mm

ONE STOP SHOP

CONTACT US

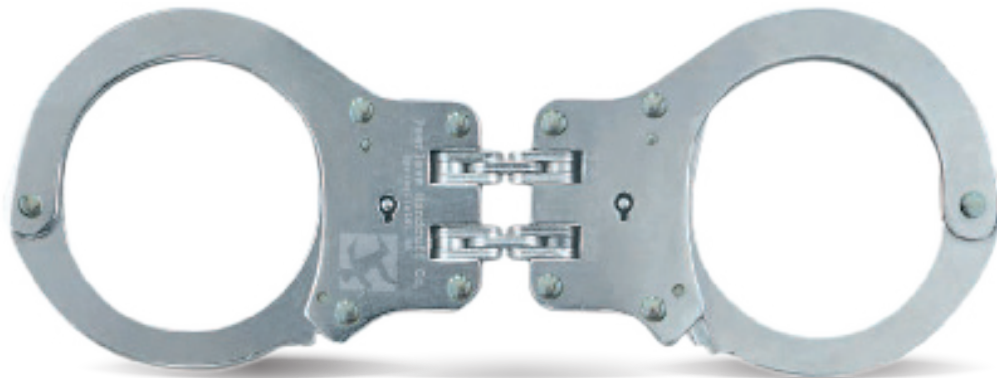
+972.3.691.4564 +972.3.691.4567 @ tar@tarideal.com www.tarideal.com
20 Zvi Bergman St. Petah Tikva, 4927976, Israel

LAW ENFORCEMENT

World Leader in Supplying
LAW ENFORCEMENT Equipment and Training

CUFFS - HINGED HANDCUFFS

TA03107



*Image is for illustration purposes only

Cheek Body	Steel SHP-1 : 2.6/T, Nickel Plated
Ratchet Arm	Steel SM45C : 4.0/T, Nickel Plated
Weight	320/gms
Feature	Embossing type cheek plate & I beam ratchet Double locking system & Inside protect wall Plating Nickel : 3.96 microns
Min. Inside perimeter	155/mm
Max. Inside perimeter	210/mm
Wrist Opening	52/mm

ONE STOP SHOP

CONTACT US

+972.3.691.4564 +972.3.691.4567 @ tar@tarideal.com www.tarideal.com
20 Zvi Bergman St. Petah Tikva, 4927976, Israel